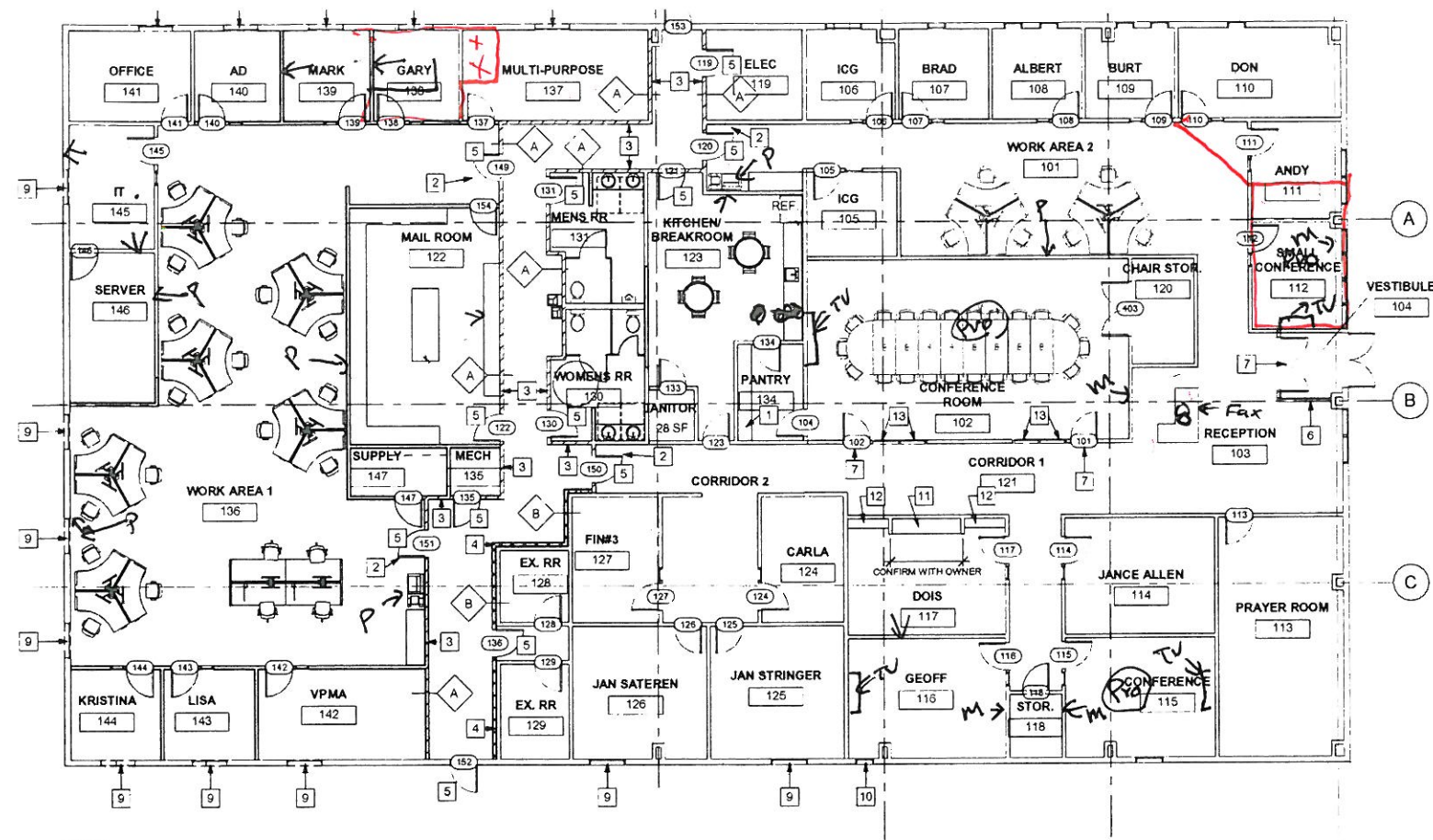


Each outlet by sport

All Projectors  
-out.

TUs need two media boxes.



NOTES

- 1 UNDERCOUNTER ICEMAKER WITH CONDENSATE PUMP TO DRAIN LINE
- 2 PROVIDE MAGNETIC "HOLD OPEN" DEVICE WITH RELEASES WHEN SMOKE DETECTOR ON EITHER SIDE OF DOOR IS ALARMED - PROVIDE ALL WIRING AND CONTROL EQUIPMENT - SMOKE DETECTOR TO BE HARD WIRED - SEE REFLECTED CEILING PLAN FOR SMOKE DETECTOR LOCATION
- 3 1 HOUR RATED CORRIDOR WALL. SEE SHEET A0 2 FOR WALL CONSTRUCTION
- 4 1 HOUR RATED CORRIDOR WALL CONSTRUCTED OVER EXISTING WALL. SEE SHEET A0 2 FOR WALL CONSTRUCTION
- 5 20 MINUTE RATED DOOR. LABELED. SEE DOOR SCHEDULE - PROVIDE CLOSER AND RATED, LABELED FRAME
- 6 STOREFRONT - 7'-0" HIGH
- 7 STOREFRONT DOOR
- 8 16" X 72" TEMPERED GLASS SIDE LIGHT WINDOW
- 9 2'-0" HIGH 4'-0" WIDE STOREFRONT WINDOW. 1" INSULATED GLASS. MOUNT SILL AT 5'-0" A F F
- 10 2'-0" HIGH 2'-0" WIDE STOREFRONT WINDOW. 1" INSULATED GLASS. MOUNT SILL AT 5'-0" A F F
- 11 FURNITURE BY OWNER
- 12 12" DEEP BOOKCASE
- 13 3'-0" X 6'-0" WINDOW

1 FLOOR PLAN  
1/8" = 1'-0"

M -> Media box  
w/Data

P -> printer.  
ELe. outlet ?

